



FDOT Broward County Traffic Report January 4, 2019 through January 11, 2019

FORT LAUDERDALE --FORT LAUDERDALE – Construction and maintenance-related lane closures on state highways in Broward County are expected during the week of December 4-11, 2019. Weather permitting work will be done at the following locations through the county. For around-the-clock, real-time traffic information on major south Florida highways call 511, download the FL 511 app on your mobile device or view real-time video from the Florida Department of Transportation's traffic monitoring cameras on the web at www.FL511.com. For updated lane closures information, visit our website at www.d4fdot.com and follow us on Twitter @MyFDOT_SEFL.

Interstate 95

1.I-95 from south of Broward Boulevard to north of Commercial Boulevard in Fort Lauderdale

Traffic Impact:

- I-95 will have three lanes closed in each direction Sunday through Thursday night between 9 p.m. and 5 a.m. The first two lanes will close at 9 p.m., the third lane at 10 p.m. and the fourth lane at 11 p.m. until 5 a.m. All lanes will be open by 5:30 a.m.
- I-95 in both directions, from south of Davie Boulevard to north of Commercial Boulevard, will have intermittent shoulder and ramp shoulder closures, as needed, daily and nightly.
- The I-95 northbound entrance ramp from Oakland Park Boulevard will be closed, nightly, as needed, 9 p.m. until 5 a.m., Sunday through Thursday. Traffic will be detoured via Commercial Boulevard and Powerline Road.
- The I-95 northbound exit ramps to Oakland Park Boulevard will be closed as needed 10 p.m. until 5 a.m., Sunday through Thursday. Traffic will be detoured via I-95 and Commercial Boulevard. FHP will be on site to assist motorists.
- The I-95 northbound exit ramp to eastbound Oakland Park Boulevard will have one inside lane closed daily, 9 a.m. until 3 p.m., Monday through Friday.
- The I-95 northbound exit ramp to Commercial Boulevard will be closed as needed, 10 p.m. until 5 a.m., Sunday through Thursday. Traffic will be detoured via I-95 and Cypress Creek Road. FHP will be on site to assist motorists.

- The I-95 northbound exit ramp to Commercial Boulevard will have one inside lane closed daily, 9 a.m. until 3 p.m., Monday through Friday.

Description: This project will extend the High Occupancy Toll lanes from north of Commercial Boulevard to south of SW 10th Street in Broward County. The scope of work includes adding a lane and converting the High Occupancy Vehicle (HOV) lanes to create two express lanes in each direction. Other work includes: installing Intelligent Transportation System (ITS) and tolling equipment, ramp signaling at the I-95 entrance ramps at Davie Road, Broward Boulevard, Sunrise Boulevard, Oakland Park Boulevard and Commercial Boulevard, widening bridges, and installing noise barrier walls at locations along I-95 northbound between Atlantic Boulevard and Sample Road, and along I-95 southbound north of Sample Road. Contract time for this \$149 million project began Sunday, October 4, 2015. Construction began Sunday, August 21, 2016. For more information, please contact Community Outreach Specialist Andrea Pacini at 954-299-6561.

Cost/Completion: Construction cost is \$150 million. Completion is expected in summer 2020.

2.I-95 from north of Commercial Boulevard in Fort Lauderdale to south of SW 10th Street in Deerfield Beach

Traffic Impact:

- I-95 between Commercial Boulevard and SW 10th Street will be have three lanes closed in each direction Sunday through Thursday night. The first lane will close at 10:30 p.m., the second lane at 11:30 p.m. and the third lane at 12:30 a.m. until 5:30 a.m.
- One lane in each direction of Cypress Creek Road will be closed daily, 9 a.m. until 3:30 p.m., Monday through Friday.
- Cypress Creek at I-95 will undergo a full overnight closure for bridge construction, 11 p.m. until 5 a.m., Sunday through Thursday, beginning Sunday night, January 6, 2019. Eastbound traffic will be detoured via N. Andrews Avenue, I-95 and Commercial Boulevard. Westbound traffic will be detoured via I-95 and Atlantic Boulevard. FHP will be on site to assist motorists

Ramp Impacts:

- The I-95 southbound exit ramp to eastbound Copans Road will be closed, as needed for paving, 10 p.m. until 5 a.m., Monday through Thursday. Traffic will be detoured via I-95 and Atlantic Boulevard. FHP will be on site to assist motorists.
- The I-95 southbound exit ramp to westbound Copans Road will be closed, as needed for paving, 10 p.m. until 5 a.m., Monday through Thursday. Traffic will be detoured via I-95 and Atlantic Boulevard. FHP will be on site to assist motorists.
- The I-95 southbound entrance ramp from eastbound Copans Road will be closed, as needed for paving, 10 p.m. until 5 a.m., Monday through Thursday. Traffic will be detoured via I-95 and Sample Road. FHP will be on site to assist motorists.
- The I-95 southbound entrance ramp from westbound Copans Road will be closed, as needed for paving, 10 p.m. until 5 a.m., Monday through Thursday. Traffic will be detoured via N. Andrews Avenue, I-95 and Sample Road. FHP will be on site to assist motorists.

- The I-95 southbound exit ramp to westbound Atlantic Boulevard will be closed, as needed for paving, 10 p.m. until 5 a.m., Monday through Thursday. Traffic will be detoured via I-95 and Cypress Creek Road. FHP will be on site to assist motorists.
- The I-95 southbound exit ramp to eastbound Atlantic Boulevard will be closed, as needed for paving, 10 p.m. until 5 a.m., Monday through Thursday. Traffic will be detoured via I-95 and Cypress Creek Road. FHP will be on site to assist motorists.
- The I-95 southbound entrance ramp from Atlantic Boulevard will be closed, as needed for paving, 10 p.m. until 5 a.m., Monday through Thursday. Traffic will be detoured via N. Andrews Avenue. FHP will be on site to assist motorists.

****Please note that consecutive ramps won't be closed at the same time.****

Description: This project will extend the High Occupancy Toll lanes from north of Commercial Boulevard to south of SW 10th Street in Broward County. The scope of work includes adding a lane and converting the High Occupancy Vehicle (HOV) lanes to create two express lanes in each direction. Other work includes: installing Intelligent Transportation System (ITS) and tolling equipment, ramp signaling at the I-95 entrance ramps at Andrews Avenue, Cypress Creek Road and Atlantic Boulevard, widening bridges and installing noise barrier walls at locations along I-95 northbound between Atlantic Boulevard and Sample Road, and along I-95 southbound north of Sample Road. Contract time for this \$154 million project began Friday, January 8, 2016. Construction began Sunday, August 14, 2016. For more information, please contact Community Outreach Specialist Andrea Pacini at 954-299-6561.

Cost/Completion: Construction cost is \$154 million. Completion is expected in fall 2019.

3.I-95 Interchange from Hillsboro Boulevard to SW 10th Street

Traffic Impact:

- The I-95 southbound exit ramp to SW 10th Street will be fully closed, as needed, 9 p.m. until 5 a.m., Sunday through Thursday. Motorists will be detoured via Hillsboro Boulevard.

Description: Construction on this 1.5-mile project began Monday, January 26, 2015. Work consists of widening southbound I-95 to add an auxiliary lane from the Hillsboro Boulevard entrance ramp to the SW 10th Street exit ramp, widening the existing southbound I-95 exit ramp to SW 10th Street, addition of a free flow right turn lane to westbound SW 10th Street, widening of westbound SW 10th Street to add an acceleration lane, utility relocation, milling and resurfacing, bridge widening, installation of barrier walls, curbs, sidewalks, guardrail, drainage, overhead signs, signing and pavement markings, signals, lighting, and retaining walls. This is the first of five interchange improvement projects throughout Broward and Palm Beach Counties. For more information, please contact **Community Outreach Specialist Andrea Pacini** at 561-214-3358.

Cost/Completion: Construction cost for all five projects is \$32.5 million. Completion in January 2019.

- **I-95 traffic impacts:** I-95 will have three lanes closed in each direction nightly, as needed, Sunday through Thursday, between Hillsboro Boulevard and Palmetto Park Road, with the first lane closing at 9:30 p.m., the second lane closing at 10:30 p.m., and the third lane closing at 11:30 p.m. until 5:30 a.m.

- **Palmetto Park Road traffic impacts:**
 - Palmetto Park Road at I-95 will have the eastbound inside ramp lane to I-95 northbound closed through March 2019.
 - Palmetto Park Road at I-95 will have the westbound inside lane closed through March 2019; the existing westbound ramp lane to I-95 southbound will be converted to a thru/ramp lane.
 - Palmetto Park Road at I-95 will have two lanes closed in each direction nightly, as needed, Sunday through Thursday. The first lane will close at 9 p.m., and the second lane will close at 10:30 p.m. All lanes will be opened by 5:30 a.m.
 - Palmetto Park Road at I-95 will have one lane closed in each direction daily, as needed, 9:30 a.m. until 3 p.m., Monday through Friday.
- **Camino Real traffic impacts:**
 - Camino Real at I-95 will have one lane closed in each direction daily, as needed, 9:30 a.m. until 4 p.m., Monday through Friday.
- **Ramp Impacts:**
 - The I-95 northbound exit ramp to Palmetto Park Road will be closed nightly, 11 p.m. until 5 a.m., Sunday through Thursday. Motorists will be detoured via I-95 northbound, Hillsboro Boulevard, and Military Trail. FHP will be on site to assist motorists.
 - The I-95 southbound entrance ramp from westbound Palmetto Park Road will be closed nightly, 11 p.m. until 5 a.m., Sunday through Thursday. Motorists will be detoured via Military Trail and Hillsboro Boulevard. FHP will be on site to assist motorists.
 - The I-95 southbound entrance ramp from eastbound Palmetto Park Road will be closed nightly, 11 p.m. until 5 a.m., Sunday through Thursday. Motorists will be detoured via Military Trail and Hillsboro Boulevard. FHP will be on site to assist motorists.
 - The I-95 southbound exit ramp to Hillsboro Boulevard will be closed nightly, 11 p.m. until 5 a.m., Sunday through Thursday. Motorists will be detoured via I-95 southbound, SW 10th Street, and Military Trail. FHP will be on site to assist motorists.
 - The I-95 southbound entrance ramp from eastbound Hillsboro Boulevard will be closed nightly, 11 p.m. until 5 a.m., Sunday through Thursday. Motorists will be detoured via Military Trail and SW 10th Street. FHP will be on site to assist motorists.
 - The I-95 southbound exit ramp to SW 10th Street will be closed nightly, 11 p.m. until 5 a.m., Sunday through Thursday. Motorists will be detoured via I-95 southbound, Hillsboro Boulevard and Military Trail. FHP will be on site to assist motorists.
 - The I-95 southbound entrance ramp from eastbound and westbound SW 10th Street will be closed nightly, 11 p.m. until 5 a.m., Sunday through Thursday. Motorists will be detoured via Military Trail and Sample Road. FHP will be on site to assist motorists.

- The I-95 northbound exit ramp to SW 10th Street will be closed nightly, 11 p.m. until 5 a.m., Sunday through Thursday. Motorists will be detoured via I-95 northbound, Hillsboro Boulevard, and Military Trail. FHP will be on site to assist motorists.
 - The I-95 northbound entrance ramp from eastbound and westbound SW 10th Street will be closed nightly, 11 p.m. until 5 a.m., Sunday through Thursday. Motorists will be detoured via Military Trail and Hillsboro Boulevard. FHP will be on site to assist motorists.
 - The I-95 northbound exit ramp to eastbound and westbound Hillsboro Boulevard will be closed nightly, 11 p.m. until 5 a.m., Sunday through Thursday. Motorists will be detoured via I-95 northbound, SW 10th Street, and Military Trail. FHP will be on site to assist motorists.
 - The I-95 northbound entrance ramp from eastbound Hillsboro Boulevard will be closed nightly, 11 p.m. until 5 a.m., Sunday through Thursday. Motorists will be detoured via Military Trail and Palmetto Park Road. FHP will be on site to assist motorists.
 - The I-95 northbound entrance ramp from westbound Hillsboro Boulevard will be closed nightly, 11 p.m. until 5 a.m., Sunday through Thursday. Motorists will be detoured via Military Trail and Palmetto Park Road. FHP will be on site to assist motorists.
- **Please note that ramp closures will be performed as needed per paving production; consecutive ramps will not be closed at the same time.

Interstate 75

4.Segments A & B - I-75 from NW 170 to South of Miramar Parkway

- One northbound lane of Florida's Turnpike just east of Exit 39 will be closed from 1 a.m. to 7 a.m. Saturday, January 5.
- Two northbound lanes of I-75 from Florida's Turnpike to Snake Creek Canal will be closed Friday, January 4 through Thursday, January 10 from 9 p.m. to 5 a.m.
- Two lanes in each direction of I-75 from Florida's Turnpike to NW 170 Street will be closed Friday, January 4 through Thursday, January 10 from 9 a.m. to 5 p.m. and or 9 p.m. to 5 a.m.
- One lane in each direction of Florida's Turnpike from Red Road to the I-75 Interchange will be closed Sunday, January 6 through Thursday, January 10 from 9 p.m. to 6 a.m.
- One lane in each direction of Florida's Turnpike from I-75 Interchange to Okeechobee Road will be closed Sunday, January 6 through Thursday, January 10 from 9 p.m. to 6 a.m.
- One ramp lane of I-75 from Florida's Turnpike from Okeechobee Road to I-75 Interchange will be closed Sunday, January 6 through Thursday, January 10 from 9 p.m. to 6 a.m.
- One lane in each direction of I-75 from Snake Creek Canal to Florida's Turnpike may be closed nightly Sunday, January 6 through Thursday, January 10 from 9 p.m. to 6 a.m.

- Two southbound lanes of I-75 from Miami Gardens Drive to Florida's Turnpike on-ramp may be closed Sunday, January 6 through Thursday, January 10 from 11 p.m. to 6 a.m.
- Two lanes in each direction of I-75 from Florida's Turnpike to Miramar Parkway may be closed Sunday, January 6 through Thursday, January 10 from 9 p.m. to 5 a.m.
- Two lanes in each direction of I-75 from Florida's Turnpike to Miami Gardens Drive may be closed nightly Sunday, January 6 through Thursday, January 10 from 11 p.m. to 5 a.m.
- One lane in each direction of I-75 from NW 170 Street to Florida's Turnpike may be closed Sunday, January 6 through Thursday, January 10. The northbound lane may be closed from 8 p.m. to 4 p.m., and the southbound lane may be closed from 10 a.m. to 6 a.m.
- One lane in each direction of I-75 at Florida's Turnpike may be closed Sunday, January 6 through Thursday, January 10 from 9 p.m. to 6 a.m.
- Three lanes in each direction of I-75 from Miramar Parkway to Florida's Turnpike may be closed nightly Sunday, January 6 through Thursday, January 10 from 9 p.m. to 5 a.m.
- Two southbound lanes of I-75 from Miramar Parkway to Miami Gardens may be closed Sunday, January 6 through Thursday, January 10 from 9 a.m. to 5 p.m. and or 9 p.m. to 5 a.m.
- Two lanes in each direction of I-75 from Snake Creek Canal to Miami Gardens Drive may be closed Sunday, January 6 through Thursday, January 10 from 9 a.m. to 5 p.m. and or 9 p.m. to 5 a.m.
- Two lanes in each direction of I-75 from Miramar Parkway to NW 170 Street may be closed Sunday, January 6 through Thursday, January 10 from 9 a.m. to 5 p.m. and or 10 p.m. to 6 a.m.
- One northbound ramp lane of I-75 will be closed Saturday, January 5 from 3 a.m. to 8 a.m.

595 Express

- 1 North Lane on Westbound State road 84 East and West of Davie Road will be closed for 24 hours a day starting at 9:30pm Monday, January 7, 2019 and ending 6:00am Monday, January 14, 2019 for Construction of Traffic separators, milling and resurfacing.
- 1 North Lane on Westbound State road 84 East and West of Davie Road will be closed from 9:30pm to 6:00am; Two north lanes on Westbound State Road 84 East and West of Davie Road will be closed from 10:30pm to 6:00am on Sunday January 6, 2019 to Monday, January 14, 2019 for milling and paving.
- Full Ramp Closure on Westbound I 595 Off Ramp to Davie Road will be closed 10:00pm to 6:00am on Friday, January 4, 2019 to Friday, January 11, 2019 to Remove and replace existing static signs.

- Full Ramp Closure of Turnpike Southbound/Northbound Off Ramp to Westbound State Road 84 will be closed from 10:00pm to 6:00am on Friday, January 4, 2019 to Friday, January 11, 2019 to remove and replace existing static signs.

Northeast Broward

5. Broward Boulevard Improvements and Bridge Replacement Project in Fort Lauderdale

Traffic Impact:

- All lanes open through **Friday, January 11th**.

Description: Project improvements include replacing the bridge over the North Fork of the New River, removing old asphalt and resurfacing the roadway, upgrading crosswalk ramps to meet ADA requirements, upgrading signs and pavement markings, relocating bus shelters, adding roadway lighting, installing drainage structures, upgrading signalized intersections to mast arms, reconstructing sidewalks, and widening roadway to add bike lanes in each direction. For more information, contact Community Outreach Specialist Tiffani Wilshire at (954) 482-4190 or Tiffani@Valerin-Group.com.

Cost/Completion: \$16 million / Early 2019

6. Broward Mobility Project

Traffic Impact:

- One lane in each direction on NW 31 Avenue from Broward Boulevard to Commercial Boulevard will be closed periodically Monday through Friday, between 9:00 a.m. and 4:00 p.m. for asphalt punch list and final striping.

Description: The improvements under this contract include constructing sidewalks, multi-use pedestrian paths, and bicycle lanes along 45 roadways in Broward County within Hollywood, Pembroke Pines, Davie, Plantation, Deerfield Beach, Pompano Beach, Lauderdale Lakes, and Fort Lauderdale. For more information, contact Community Outreach Specialist Tiffani Wilshire at (954) 482-4190 or Tiffani@Valerin-Group.com.

Cost/Completion: \$15 million / early 2019

7.A1A Landscaping Improvements Project from Oakland Park Boulevard to Flamingo Avenue in Fort Lauderdale

Traffic Impact:

- One southbound lane of Commercial Boulevard to NW 31 Street South to Oakland Park Boulevard will be closed Monday through Friday between 9 a.m. and 3 p.m. for to install directional bore conduits and roadway lighting.

Description: Project improvements include installing a new irrigation system in the median and along both sides of the road and installing plants in the median and along both sides of the road, including various species of palms, shade trees and shrubs. For more information, contact Community Outreach Specialist Tiffani Wilshire at (954) 482-4190 or Tiffani@Valerin-Group.com.

Cost/Completion: \$1,225,731 / Fall 2018

8.US 1 Improvements Project from Oakland Park Boulevard to Commercial Boulevard in Oakland Park and Fort Lauderdale

Traffic Impact:

- One lane closed in each direction of US 1 from Oakland Park Boulevard to NE 38 Street in Broward County will be closed Tuesday through Friday between 9 a.m. and 3:30 p.m. for the relocation of traffic signals.

Description: Project improvements include removing existing asphalt and resurfacing the road repairing sidewalks along the roadway and constructing Americans with Disabilities Act (ADA) compliant curb ramps, adding a designated 4-foot bicycle lane on both sides of the roadway and upgrading pedestrian signals at NE 33 Court, NE 43 Street, NE 38 Court and Floranada Road. For more information, contact Community Outreach Specialist Tiffani Wilshire at (954) 482-4190 or Tiffani@Valerin-Group.com.

Cost/Completion: approximately \$2 million / early 2019

9.SR 811 / NE 4 Avenue / Wilton Drive Complete Streets Project in Fort Lauderdale and Wilton Manors

Traffic Impact:

- One lane southbound along NE 4th Avenue in the City of Fort Lauderdale from NE 12th St to NE 11th St will be permanently closed.
- One lane northbound SR 811 / NE 4th Avenue / Wilton Drive from NE 20th Street to Wilton Manor City Hall will be permanently closed.
- One lane northbound SR 811 / NE 4th Avenue / Wilton Drive from NE 21st Court to NE 7th Avenue will be temporarily permanently closed through the end of the month for the installation of a drainage structure, sidewalk, curb, and gutter.
- The sidewalk on the east side of SR 811 / NE 4th Avenue / Wilton Drive between NE 21st Court to NE 9th Avenue will be temporarily permanently closed through the end of the month for the installation of drainage structures, bulb outs, and sidewalk.

Description: Project improvements include removing old asphalt and resurfacing the roadway, upgrading signs and pavement markings, adding a buffered bike lane in each direction, widening sidewalks, upgrading pedestrian signals and modifying pedestrian curb ramps to meet ADA requirements, upgrading roadway and pedestrian lighting, and installing new drainage structures and upgrading the existing drainage system. For more information, contact Community Outreach Specialist Tiffani Wilshire at (954) 482-4190 or Tiffani@Valerin-Group.com.

Cost/Completion: \$3.3 million / late 2019

10.NW 19 Street Bike Lanes and Rehabilitation Project in Lauderdale Lakes, Lauderhill, and Fort Lauderdale

Traffic Impact:

- The outside westbound lane of NW 19 Street from NW 30 Avenue to NW 32 Avenue will continuously be closed through March 2019 for roadway widening, drainage installation, sidewalk modification and bus shelter relocation.

Description: The improvements under this contract consist of added bike lanes along NW 19th St. via lane width reduction with milling and resurfacing, sidewalk and driveways, ADA ramps with detectable warnings, drainage improvements, curb and gutter, bus shelter relocations, signing and pavement markings, and signalization with pedestrian detectors and lighting including LED retrofit at specific locations. For more information, contact Community Outreach Specialist Tiffani Wilshire at (954) 482-4190 or Tiffani@Valerin-Group.com.

Cost/Completion: \$1.3 million/Spring 2019

11.Lighting Improvements Project in Broward County

Traffic Impact:

Description: The improvements for this contract include installing new light poles and upgrading light poles to LED lighting and will occur in the cities of Fort Lauderdale, Plantation, West Park, Davie, Hollywood, Miramar and Lauderdale in Broward County. For more information, contact Community Outreach Specialist Tiffani Wilshire at (954) 482-4190 or Tiffani@Valerin-Group.com.

Cost/Completion: Winter 2020

Northwest Broward

12.SR 7 Improvements Project from Commercial Boulevard to south of Glades Road in Tamarac, North Lauderdale, Fort Lauderdale, Margate, Coral Springs, Coconut Creek, Parkland and Palm Beach County

Commercial Boulevard to Broward / Palm Beach County Line:

Traffic Impact:

- One lane in each direction between north of NW 31 Street and south of Broward/Palm Beach County will be closed Thursday through Saturday between 9:00 a.m. to 3:00 p.m. for the installation of drainage structures, concrete, roadway lighting and road widening operations.
- One lane southbound on SR 7 between Commercial Boulevard and NW 31 Street will be closed Monday through Saturday between 9:00 a.m. and 3:00 p.m. for the installation of directional bore conduits and roadway lighting.

Description: The improvements under this contract include removing old asphalt and resurfacing the roadway, upgrading pedestrian features including 10-foot sidewalks on both sides and detectable warning surfaces at crosswalks, installing overhead sign structures, upgrading signs and pavement markings to include a 7-foot bike lane in each direction, installing new bus shelters with bicycle racks, trash receptacles, and benches, upgrading drainage structures, upgrading signalization, including pedestrian signals and detectors and vehicle video detection, and upgrading lighting. For more information, contact Community Outreach Specialist Tiffani Wilshire at (954) 482-4190 or Tiffani@Valerin-Group.com.

Cost/Completion: \$13,403,577.42 / Late 2019

Broward / Palm Beach County Line to south of Glades Road:

Traffic Impact:

- One lane in each direction at the Broward/Palm Beach County line to just south of SR-808 Glades Road on SR 7 will be closed Monday through Friday between 9:00 a.m. to 3:00 p.m. for material deliveries.

Description: The improvements under this contract include removing old asphalt and resurfacing the roadway, minor shoulder widening, upgrading drainage structures, upgrading pedestrian features including a 10-foot sidewalk on the west side and a 5-foot sidewalk on the east side, and detectable warning surfaces at crosswalks, upgrading signalization, including pedestrian signals and detectors and vehicle video detection, upgrading signs and pavement markings to include a 7-foot bike lane in each direction, and upgrading lighting.

For more information, contact Community Outreach Specialist Tiffani Wilshire at (954) 482-4190 or Tiffani@Valerin-Group.com.

Cost/Completion: \$6,772,377.23 / Spring 2019

13. Districtwide Truck Parking Availability System Project in Martin, St. Lucie, and Broward Counties

Traffic Impact:

- **All lanes open through January 11.**

Description: On Monday, March 19, Traffic Control Devices, Inc. will begin installing a Truck Parking Availability System (TPAS) at rest areas and weigh stations in Martin, St. Lucie, and Broward Counties, which detects available spaces at rest areas and weigh stations and alerts commercial drivers via message boards. The Truck Parking Availability System installation will occur at the following locations: I-95 Northbound & Southbound Rest Areas in St. Lucie County at MM 133, two miles north of Orange Avenue / SR 68 (Exit 131), near Ft. Pierce; I-95 Northbound Rest Area in Martin County at MM 106, four miles south of Martin Highway / SR 714 (Exit 110), near Palm City; I-95 Southbound Rest Area in Martin County at MM 107, three miles south of Martin Highway / SR 714 (Exit 110), near Palm City; I-95 Southbound Weigh-in-Motion Station in Martin County at MM 113, one mile south of Becker Road (Exit 114), near Palm City; I-95 Northbound Weigh-in-Motion Station in Martin County at MM 92, four miles south of Bridge Road (Exit 96), near Hobe Sound; and I-75 Rest Area in Broward County at MM 34, 11 miles north of SR 25 / US 27 South (Exit 23), near Weston. For more information, contact Community Outreach Specialist Kathleen Dempsey at (772)359-5118 or kdempsey@corradino.com.

Cost/Completion: \$2,285,285.00/ early 2019

14. All Electronic Tolling (AET) Phase 5A from I-595 to s/o Lantana Road

Traffic Impact:

- **Florida's Turnpike northbound and southbound between south of Commercial Boulevard to south of Sawgrass Expressway**, single and double lane closures, 10 p.m. to 5 a.m., Sunday, January 6 through Thursday, January 10.
- **Florida's Turnpike northbound exit ramp to Commercial Boulevard**, intermittent single lane closures, 9 p.m. to 5 a.m., Sunday, January 6 through Thursday, January 10.; **AND** 10 a.m. to 2 p.m., Monday, January 7 through Friday, January 11.

- **Florida's Turnpike southbound entrance ramp from Commercial Boulevard will be closed nightly from 9 p.m. to 5 a.m., Sunday, January 6 through Thursday, January 10.**

- DETOUR – Motorists will be directed to travel east on Commercial Boulevard, continue south on SR 7/US 441 and continue west on Sunrise Boulevard to enter southbound Turnpike.

Please note, entrance and exit ramps will not be closed at the same time.

- **Florida's Turnpike southbound entrance ramp from Boynton Beach Boulevard will be closed nightly from 9 p.m. to 5 a.m., Sunday, January 6 through Thursday, January 10.**

- DETOUR – Motorists will be directed to travel west on Boynton Beach Boulevard to Lyons Road, travel south on Lyons Road to Atlantic Avenue and continue east on Atlantic Avenue to access southbound Florida's Turnpike.

- **Florida's Turnpike southbound exit ramp to Boynton Beach Boulevard (Exit 86) will be closed nightly from 9 p.m. to 5 a.m., Sunday, January 6 through Thursday, January 10.**

- DETOUR – Motorists will be directed to exit at Lake Worth Road (Exit 93), travel west on Lake Worth Road to US 441/SR 7 and continue south on US 441/SR 77 to access Boynton Beach Boulevard.

- **Commercial Boulevard eastbound and westbound between Rock Island Road and east of SR 7/US 441, single lane closures, 9:30 a.m. to 3:30 p.m., Monday, January 7 through Thursday, January 11.**

**Please note, this closure will not affect the entrance or exit ramps.*

- **Commercial Boulevard eastbound between Rock Island Road and east of SR 7/US 441, single lane closures, 9 p.m. to 5 a.m., Sunday, January 6 through Thursday, January 10.**

**Please note, this closure will not affect the entrance or exit ramps.*

- **Atlantic Boulevard eastbound and westbound in the vicinity of the Florida's Turnpike, single lane closures, 9 a.m. to 3:30 p.m., Monday, January 7 through Thursday, January 11.**

**Please note, this closure will not affect the entrance or exit ramps.*

- **Atlantic Boulevard eastbound in the vicinity of the Florida's Turnpike, single lane closures, 9 p.m. to 5 a.m., Monday, January 6 through Thursday, January 10.**

**Please note, this closure will not affect the entrance or exit ramps.*

- **Sample Road eastbound and westbound between Tradewinds Park Road and NW 27th Avenue, single lane closures, 9 a.m. to 3:30 p.m., Monday, January 7 through Thursday, January 11.**

**Please note, this closure will not affect the entrance or exit ramps.*

- **Toll Plaza Road at Sample Road, on ramps and off ramps will be closed from 9 p.m. to 5 a.m., Sunday, January 6 through Thursday, January 10.**

**Please Note, on/off ramp closure will be on different days*

- Coconut Creek Parkway eastbound and westbound between Coconut Creek Boulevard and NW 27th Avenue, single lane closures, 9 a.m. to 3:30 p.m., Monday, January 7 through Thursday, January 11
- SR 7/US 441 northbound and southbound at various locations approaching Commercial Boulevard, single lane closures, 9 a.m. to 3:30 p.m., Monday, January 7 through Thursday, January 11.

Description: Work consists of providing all labor, materials, equipment, and incidentals necessary to continue with the complete conversion of the Turnpike Mainline to an All Electronic Toll (AET) collection system in Broward County. The comprehensive scope includes: milling and resurfacing, new pavement, drainage improvements, curb & gutter, lighting, highway signing, guardrail, MSE walls, toll facilities improvements, and other incidental construction on SR 91 (Turnpike Mainline) from I-595 (MP 54) to South of Lantana Toll Plaza (MP 88) for 34 miles in Broward and Palm Beach Counties. Construction to begin in Summer 2018 through the end of 2020. For more information, contact Fiorella Teodista at (954) 934-1130 or Fiorella.Teodista@dot.state.fl.us.

Cost/Completion: \$20.4 million / Summer 2020

15. Turnpike and Sunrise Boulevard (Exit 58) Interchange Modifications

Traffic Impact:

- Florida's Turnpike northbound and southbound between Sunrise Boulevard (Exit 58) and Broward Boulevard, double lane closures, 10 p.m. to 5 a.m., Sunday, January 6th thru Thursday, January 10th. A third lane in each direction may close beginning at 11 p.m. All lanes will reopen by 5 a.m.
- The existing southbound entrance ramp from Sunrise Boulevard to Florida's Turnpike will be closed nightly from 11 p.m. to 5 a.m., Sunday, January 6th thru Tuesday, January 10th. This closure is to accommodate bridge related activities.
 - DETOUR – Motorists will be directed to travel east on Sunrise Boulevard to SR 7/US 441, then travel south to the westbound ramp to I-595 and follow the signs to access southbound Turnpike.

-As an alternate to the above detour, motorists should be aware that the new AET Southbound Entrance ramp from Eastbound Sunrise Blvd. will be open and can be used to access Southbound Turnpike.

- All northbound lanes on Florida's Turnpike at the Sunrise Boulevard interchange will be closed nightly from 11 p.m. to 5 a.m., Monday, January 7th and Tuesday, January 8th.
 - o DETOUR – Motorists on northbound Florida's Turnpike wishing to continue north will be directed to exit northbound Turnpike at eastbound Sunrise Boulevard (Exit 58A), travel east on Sunrise Boulevard to US 441/SR 7, travel north on US 441/SR 7 to Commercial Boulevard and travel west on Commercial Boulevard to access northbound Florida's Turnpike.
- All southbound lanes on Florida's Turnpike at the Sunrise Boulevard interchange will be closed nightly from 11 p.m. to 5 a.m., Monday, January 7th and Tuesday, January 8th.

- **DETOUR – Motorists on northbound Florida’s Turnpike wishing to continue north will be directed to exit northbound Turnpike at eastbound Sunrise Boulevard (Exit 58A), travel east on Sunrise Boulevard to US 441/SR 7, travel north on US 441/SR 7 to Commercial Boulevard and travel west on Commercial Boulevard to access northbound Florida’s Turnpike.**
- **Sunrise Boulevard eastbound and westbound between NW 47th Avenue and NW 56th Avenue, a single lane in each direction closed nightly between 7 p.m. to 6 a.m., and a second lane may close in each direction beginning at 10 p.m. to 6:00 a.m., Sunday, January 6th through Thursday, January 10th; Also, Single lane closures daily between 9 a.m. to 4 p.m., Monday, January 7th through Friday, January 11th.**

Description: Florida’s Turnpike is modifying and improving the interchange with Sunrise Boulevard and implementing All-Electronic Tolling at the interchange. For more information, contact Fiorella Teodista at (954) 934-1130 or Fiorella.Teodista@dot.state.fl.us.

Cost/Completion: \$50 million / late 2019

16. University Drive Improvements Project in Tamarac

Traffic Impact:

- **The outside southbound lane of University Drive from north of McNab Road to south of NW 78 Street will be closed from December 20th through January 7th.**

Description: The improvements under this contract include milling and resurfacing and widening the roadway to accommodate seven-foot buffered bike lanes in each direction, upgrading signs and pavement markings, including adding green bike lane pavement markings, reconstructing sidewalks and upgrading pedestrian curb ramps, replacing the mast arm at the NE corner of McNab Road, upgrading existing lighting to LED luminaires, adding 24 new drainage structures, and relocating existing bus shelters. For more information, contact Community Outreach Specialist Tiffani Wilshire at (954) 482-4190 or Tiffani@Valerin-Group.com.

Cost/Completion: \$3.1 million / Summer 2019

Southeast Broward

17. Hollywood Boulevard Complete Streets Project in Hollywood from east of City Hall Circle to Dixie Highway

Traffic Impact:

- **All lanes open through January.**

Description: The improvements under this contract include removing old asphalt, resurfacing the roadway, adding decorative lighting, widening sidewalks and adding decorative pattern, upgrading existing pedestrian signals to countdown timers, constructing new median with parallel parking, replacing the existing water main and connections at various cross streets, and upgrading signs and pavement markings to reflect the new roadway configuration as follows: two lanes in each direction throughout the entire corridor, a four-foot bike lane in each direction separated by a two-foot buffer throughout

the entire corridor. For more information, contact Community Outreach Specialist Rebecca Guerrero at (954)218-2304 or rguerrero@corradino.com.

Cost/Completion: \$7,667,258.35 / Fall 2019

18.A1A Improvements Project from Sheridan Street to Monroe Street in Hollywood

Traffic Impact:

- **All lanes open through January.**

Description: Improvements under this project include removing old asphalt and resurfacing the roadway, widening sidewalks and upgrading ramps to meet ADA requirements, replacing drainage structures and installing flap gates, removing, narrowing, and /or upgrading medians and curb and gutter, adding 4-foot bike lanes from Monroe Street to Arizona Street, adding sharrows (share the road pavement markings) from Arizona Street to Sheridan Street, upgrading and installing new pedestrian signals, and minor signalization and street light improvements. For more information, contact Community Outreach Specialist Rebecca Guerrero at (954)218-2304 or rguerrero@corradino.com.

Cost/Completion: \$9,366,292.09 / Spring 2019

19. Mobility Improvements Project in Pembroke Pines and Hollywood

Traffic Impact:

- The right-turn lane from southbound Flamingo Road onto westbound Pembroke road is permanently closed for the installation of sidewalks.
- One eastbound lane of Hollywood Boulevard from Presidential/Academy Circle to South Park Road is permanently closed for drainage installation.

Description: Improvements under this contract consist of upgrading pedestrian signals and modifying crosswalks and pedestrian ramps to meet ADA requirements, modifying drainage structures and lighting, minor widening, installing steel sheet pile wall and guardrail, and resurfacing existing roadway where associated with pedestrian improvement, extending the length of turn lanes, widening, resurfacing, and restriping roadway to add bike lanes in both directions, upgrading pedestrian ramps and crosswalks. For more information, contact Community Outreach Specialist Rebecca Guerrero at (954)218-2304 or rguerrero@corradino.com.

Cost/Completion: \$2.3 million/ Summer 2019

Southwest Broward

20.SR 7 / US 441 Improvements from SW 25 Street to Fillmore Street in West Park, Miramar, and Hollywood

Traffic Impact:

- One lane in each direction of SR-7 from SW 25 Street to Fillmore Street will be intermittently closed Monday through Saturday between 9 a.m. and 4 p.m.

Description: The improvements under this contract include adding one through lane in each direction for a total of six lanes with left turn lanes separated by raised medians; constructing new storm sewer system and retention ponds; installing new water and sewer lines;

constructing bus bays at current bus stop locations; constructing curbs and gutters; adding or replacing sidewalks with ADA compliant ramps on both sides of the road; upgrading existing signalized intersections with mast arms and adding pedestrian countdown timers at Pembroke Road, Washington Street, and Hollywood Boulevard; improving street lighting along the corridor by installing new lighting system along the west side of SR 7 / US 441; adding Intelligent Transportation System components including digital message signs and traffic monitoring cameras, and resurfacing the roadway. For more information, contact Community Outreach Specialist Rebecca Guerrero at (954)218-2304 or rguerrero@corradino.com.

Cost/Completion: \$30.7 million / early 2019

21.SR 7 / US 441 Improvements Project from Fillmore Street to south of Stirling Road in Hollywood and the Seminole Indian Reservation

Traffic Impact:

- One lane in each direction of SR-7 from Fillmore Street to south of Stirling Road may be closed intermittently Sunday through Thursday evenings and weekends between 10 p.m. and 5 a.m.

Description: Project improvements include adding one through lane in each direction for a total of six lanes with left turn lanes separated by raised medians, constructing new storm sewer system and retention ponds, installing new water and sewer lines, constructing bus bays at current bus stop locations, constructing curbs and gutters, adding or replacing sidewalks with ADA compliant ramps on both sides of the road, upgrading existing signalized intersections with mast arms and add pedestrian countdown timers at Johnson Street, Taft Street, and Sheridan Street, installing new signalized intersection and pedestrian countdown timers at Fillmore Street, improving street lighting along the corridor by installing new lighting system along the west side of SR 7/US 441, adding Intelligent Transportation System components including digital message signs and traffic monitoring cameras, and resurfacing the roadway. For more information, contact Community Outreach Specialist Rebecca Guerrero at (954)218-2304 or rguerrero@corradino.com.

Cost/Completion: \$29.6 million / Spring 2019

22. Hallandale Beach Boulevard Improvements from SR 7 to Lake Shore Drive in Pembroke Park and West Park

Traffic Impact:

- All lanes open through Janaury 11.

Description: The improvements under this contract include adding new drainage along project corridor, removing old asphalt and resurfacing the roadway within project limits, installing new traffic signal mast arms and pedestrian countdown timers at SW 56th Avenue and SW 40th Avenue, and installing 4-foot bike lanes throughout the project limits. For more information, contact Community Outreach Specialist Rebecca Guerrero at (954)218-2304 or rguerrero@corradino.com.

Cost/Completion: \$6.6 million / early 2019.

23. Advanced Traffic Management System Installation on Pines Boulevard from Dykes Road to Flamingo Road in Pembroke Pines

Traffic Impact:

- All lanes open through January.

Description: The improvements under this contract include the installation of Intelligent Transportation System (ITS), Adaptive Traffic Control System (ATCS), and Advanced Transportation Management System (ATMS) components. These include enhancements to vehicle detection, fiber optic communications infrastructure, traffic monitoring cameras, and new poles and data collection devices at the eight signalized intersections and the I-75 interchange within the project limits. For more information, contact Community Outreach Specialist Rebecca Guerrero at (954)218-2304 or rguerrero@corradino.com.

Cost/Completion: \$2,949,000 / Late 2018

24. Hollywood Gardens West Sidewalk Improvements Project in Hollywood

Traffic Impact:

- No lane closures are anticipated for this project.

Description: The improvements under this contract include updating striping on the existing roadway to provide up to 7-foot bike lanes in each direction on Columbus Parkway and Glenn Parkway from south of Johnson Street to south of Tyler Street, adding sharrow pavement markings (share the road arrows) on N 58 Avenue from Johnson Street to Hollywood Boulevard, Lincoln Street and Polk Street from SR 7 to N 56 Avenue and Taft Street from N 20 Avenue to N 14 Avenue, constructing new sidewalks and repairing damaged sidewalks, modifying and adding drainage structures and regrading swale areas, relocating mailboxes and fences, and removing trees as needed to accommodate the proposed improvements and installing light poles and signs throughout the project limits. For more information, contact Community Outreach Specialist Rebecca Guerrero at (954)218-2304 or rguerrero@corradino.com.

Cost/Completion: \$2,654,817.48 / spring 2019

25. Davie Road Park and Ride Lot Improvements in Davie

Traffic Impact:

- The park and ride lot is closed through spring 2019. While construction is ongoing, 595 Express Route 114 will temporarily serve the Fort Lauderdale Airport Tri-Rail Station in Dania Beach. Customers can also board the bus at the BB&T Center in Sunrise.

Description: The improvements under this contract include adding 101 additional parking spaces for a total of 206 spaces, including 7 disabled spaces, improving lighting within the existing Park and Ride facility, installing ITS components for an Intelligent Parking System, including a dynamic message sign on eastbound SR 84 approaching Davie Road that will indicate the number of available spaces, improving sidewalk, drainage and driveways, relocating bus shelters and bus shelter pads, installing detectable warning surfaces and vehicle detection system, and upgrading signing and pavement markings. For more information, contact Community Outreach Specialist Rebecca Guerrero at (954)218-

2304 or rguerrero@corradino.com or visit
<http://www.broward.org/BCT/Pages/DavieParkAndRide.aspx>.
Cost/Completion: \$1,075,026.33 / spring 2019

26. I-75 / I-595 Interchange Landscaping Improvements Project

Traffic Impact:

- **All lanes open through January.**

Description: The improvements under this contract include installing a temporary irrigation system, constructing retaining walls of various heights and lengths that will serve as elevated planters, and installing plants throughout the interchange including several species of palms and shade trees. For more information, contact Community Outreach Specialist Rebecca Guerrero at (954)218-2304 or rguerrero@corradino.com

Cost/Completion: \$4.9 million / fall 2019

Maintenance & Permit Projects:

27. 95 Express Phase 3C

- **No lane closures are expected.**
- For more information about this work, please contact Andrea Pacini, community outreach specialist at 954.299.6561 or apacini@corradino.com

28. Signal Improvements in Fort Lauderdale

- One lane in each direction of Sunrise Boulevard at NE 10 Avenue will be closed Monday, January 7 through Friday, January 11 between 9 a.m. and 3 p.m.
- For more information about this work, please contact FDOT Project Administrator Tim Butler at Tim Butler (954) 868-7232 or Timothy.Butler@dot.state.fl.us.

29. A1A/Hillsboro Mile in Hillsboro Beach

- A1A is closed to all traffic north of the Hillsboro Inlet Bridge between 935 Hillsboro Mile and 949 Hillsboro Mile in Hillsboro Beach for a Broward County Sanitary Sewer Improvement Project. Also, A1A is reduced to one lane of traffic from 923 Hillsboro Mile to 935 Hillsboro Mile and from 977 Hillsboro Mile to 995 Hillsboro Mile. A1A through traffic should avoid this area by using US 1/Federal Highway by way of the NE 14th Street Intracoastal Waterway (ICWW) Bridge to the south and Hillsboro Boulevard ICWW Bridge to the north. For further information about this project, please contact Dickey Consulting, by phone at 877-223-8235, email at hillsboromile@dickeyinc.com, or via website [www. Hillsboromilesewerinfo.com](http://www.Hillsboromilesewerinfo.com).

30. Driveway Construction in Planation

- One westbound lane of Sunrise Boulevard from NW 47 Avenue to NW 45 Avenue will be closed beginning Monday, November 26 through Friday, February 1 between 9 a.m. and 4 p.m.
- For more information about this work, please contact Filipe Oliveira at 561-945-2417 or filipe@emssitedevelopment.com.

31. Milling and Paving on Broward Boulevard

- One eastbound lane at 2990 Broward Boulevard will be closed Monday, January 7 through Wednesday, January 16 between 9 a.m. and 3:30 p.m.
- For more information about this work, please contact Fausto Padron at 305-232-4887 or fausto@nationalconcretepaving.com

32. Utility installation on Pembroke Road

- One lane in each direction between NW 6 Avenue and NW 7 Avenue will be closed Thursday, January 3 through Saturday, January 26 between 9 a.m. and 3:30 p.m.
- For more information about this work, please contact Joseph Marsal at 561-729-9090 or Joseph@ttcmot.com

33. Utility Installation on Griffin Road

- One lane in each direction between SW 62 Avenue and SW 55 Avenue will be closed Monday, December 10 through Friday, May 31 between 9 a.m. and 3:30 p.m.
- For more information about this work, please contact Bill Yopp at 305-345-4003 or Bill@Downrite.com.

34. Landscape Installation in Miramar

- One inside lane in each direction of University Drive from Pembroke Road south to of Riviera Boulevard will be closed Monday, January 7 through Friday, February 29 between 9 a.m. and 3:30 p.m.
- For more information about this work, please contact Tom Benton at 954-214-2268 or tom@landscapeservicepros.com.

35. Utility Installation in Pompano Beach

- One northbound lane of Federal Highway from Copans Road to NE 23 Avenue will be closed Monday, January 14 through Friday, January 18 between 9 a.m. and 3:30 p.m.
- For more information about this work, please contact Mastec representative, Rene Rojas at 786-566-8157 or Rene.Rojas@mastec.com.

36. Utility relocation in Pompano Beach

- One southbound lane of Dixie Highway from NE 46 Street to NE 41 Place will be closed Monday, January 7 through Wednesday, January 16 between 9 a.m. and 3:30 p.m.
- For more information about this work, please contact Joel Pate at 321-446-8358 or jpate@ycominc.com.

FP&L Notifications

Florida Power and Light Improvements in Deerfield Beach

- One northbound lane of S Dixie Highway from SW 2nd Court to SW 10th Street will be closed Monday through Friday between 9 a.m. and 4 p.m.

Two northbound lanes of S Dixie Highway from SW 2nd Court to SW 10th Street will be closed Sunday through Thursday between 9 p.m. and 5 a.m.

For more information about this work, please contact Area Wide Protective field supervisor Shanika Shorter at (561) 302-0948 or SShorter@awptraffic.com. (Please reference FPL WR# 6071244 Pike)

01/10/2019-01/11/2019

Florida Power and Light Improvements in Deerfield Beach

- One southbound lane of S federal Hwy from SE 10th Street to NE 48th Street will be closed Monday through Friday between 9 a.m. and 4 p.m.

For more information about this work, please contact Area Wide Protective field supervisor Shanika Shorter at (561) 302-0948 or SShorter@awptraffic.com. (Please reference FPL WR# 7736807 Pike)

01/10/2019-01/11/2019

Florida Power and Light Improvements in Deerfield Beach

- One southbound lane of S federal Hwy from NE 33rd Street to NE 27th Court will be closed Monday through Friday between 9 a.m. and 4 p.m.

For more information about this work, please contact Area Wide Protective field supervisor Shanika Shorter at (561) 302-0948 or SShorter@awptraffic.com. (Please reference FPL WR# 7982115 Pike)

01/10/2019-01/11/2019

Florida Power and Light Improvements in Deerfield Beach

- One westbound lane of W Hillsboro Blvd from SW 3rd Avenue to SW 12th Avenue will be closed Monday through Friday between 9 a.m. and 4 p.m.

- For more information about this work, please contact Area Wide Protective field supervisor Shanika Shorter at (561) 302-0948 or SShorter@awptraffic.com. (Please reference FPL WR# 8190700 Pike)

01/10/2019-01/11/2019

Florida Power and Light Improvements in Davie

- One southbound shoulder of I-75 from Griffin Rd to Stirling road will be closed Monday through Friday between 9 a.m. and 4 p.m.

- For more information about this work, please contact Area Wide Protective field supervisor Shanika Shorter at (561) 302-0948 or SShorter@awptraffic.com. (Please reference FPL WR# 7215124 Pike)

01/10/2019-01/11/2019

Florida Power and Light Improvements in Cooper City

- One northbound lane of S Flamingo Road from Sheridan Street to SW 49th Street will be closed Monday through Friday between 9 a.m. and 4 p.m.
- For more information about this work, please contact Area Wide Protective field supervisor Shanika Shorter at (561) 302-0948 or SShorter@awptraffic.com. (Please reference FPL WR# 6352229 Pike)

01/10/2019-01/11/2019

Florida Power and Light Improvements in Dania Beach/Davie

- One eastbound lane and one westbound lane of State Road 84 from SW 22nd Terrace to Canal Drive will be closed Sunday through Thursday between 9 p.m. and 5 a.m.
- For more information about this work, please contact Area Wide Protective field supervisor Shanika Shorter at (561) 302-0948 or SShorter@awptraffic.com. (Please reference FPL WR#7376978 Pike)

01/10/2019-01/11/2019

Florida Power and Light Improvements in Sunrise

One southbound right lane will be closed at N University Drive
At W Oakland Park Blvd 9am to 4pm Monday – Friday
For more information about this work, please contact All American Barricades Field Supervisor Janet Campana at (561) 632-1441 or Janet@barricades.com
(Please Reference FPL WR#7733083 Volt Power)

1/07/2019-1/11/2019

Florida Power and Light Improvements in Fort Lauderdale

One westbound right lane will be closed along W Davie Blvd between
SW 35th and SW 27th Ave 9am to 4pm Monday– Friday
For more information about this work, please contact All American Barricades Field Supervisor Janet Campana at (561) 632-1441 or Janet@barricades.com
(Please Reference FPL WR#8279923 Volt Power)

1/07/2019-1/11/2019

Florida Power and Light Improvements in Fort Lauderdale

One northbound right lane will be closed at 5150 N US 441/SR 7
9am to 4pm Monday– Friday
For more information about this work, please contact All American Barricades Field Supervisor Janet Campana at (561) 632-1441 or Janet@barricades.com
(Please Reference FPL WR#8327138 Volt Power)

1/07/2019-1/11/2019

Florida Power and Light Improvements in Fort Lauderdale

One northbound right lane will be closed along Powerline Road

Between W Atlantic Blvd and Copans Road

9am to 4pm Monday – Friday

For more information about this work, please contact All American Barricades

Field Supervisor Janet Campana at (561) 632-1441 or Janet@barricades.com

(Please Reference FPL WR#7147450 Volt Power)

1/07/2019-1/11/2019

Florida Power and Light Improvements in Fort Lauderdale

One northbound right lane will be closed along Powerline Road

Between NW 15th & NW 21st Street

9am to 4pm Monday – Friday

For more information about this work, please contact All American Barricades

Field Supervisor Janet Campana at (561) 632-1441 or Janet@barricades.com

(Please Reference FPL WR#7147450 Volt Power)

1/07/2019-1/11/2019

Florida Power and Light Improvements in Plantation

One eastbound right lane will be closed along W Broward Blvd

At north SR 7/US 441 9am – 4pm Monday - Friday

For more information about this work, please contact All American Barricades

Field Supervisor Janet Campana at (561) 632-1441 or Janet@barricades.com

(Please Reference FPL WR#8163252 Volt Power)

1/07/2019-1/11/2019

Florida Power and Light Improvements in Pembroke Pines

One southbound and northbound lanes will be closed along Red Road

From Monarch Lakes Blvd to Pines Blvd Monday – Friday

9am to 4pm

For more information about this work, please contact All American Barricades

Field Supervisor Janet Campana at (561) 632-1441 or Janet@barricades.com

(Please Reference FPL WR#8465275 Volt Power)

1/07/2019-1/11/2019

Florida Power and Light Improvements in Miramar

One eastbound right lane along Miramar Parkway 1000 yards east of FL Turnpike

Vicinity of Red Road will be closed Monday – Friday 9am to 4pm

For more information about this work, please contact All American Barricades

Field Supervisor Janet Campana at (561) 632-1441 or Janet@barricades.com

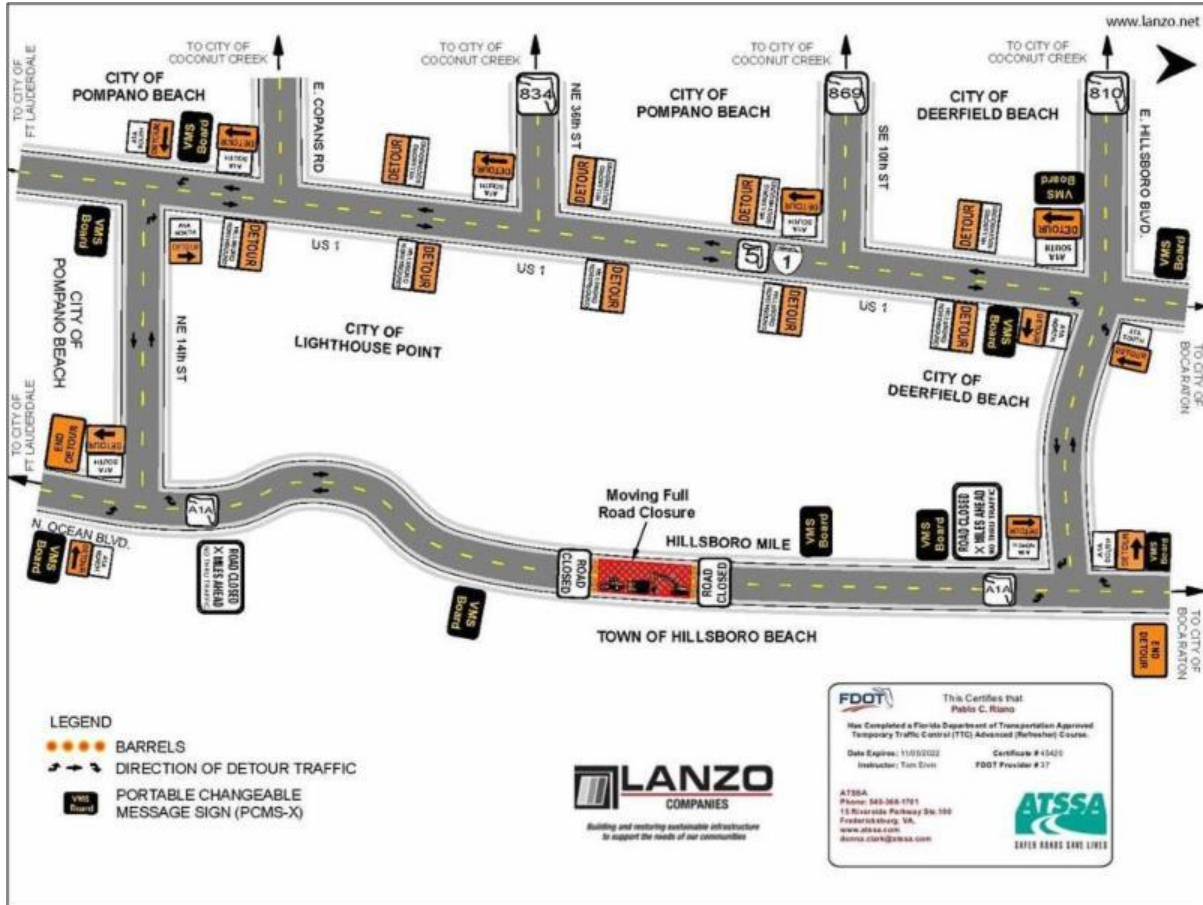
(Please Reference FPL WR#7355569 Volt Power)

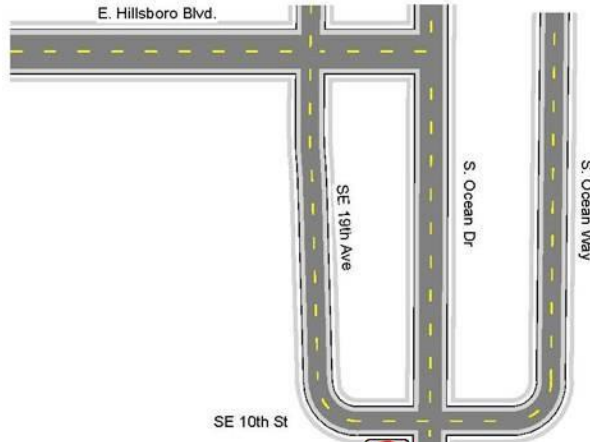
1/07/2019-1/11/2019

Hillsboro Mile



- Partial Closure (1 lane of traffic) for road restoration from 957 to 997 (please click the following link to view the detour)
- Full Closure for sanitary sewer and wellpoint installation from 997 to 1063

If you have any questions or concerns regarding the upcoming Traffic Impact Report, please call: (954) 467-6822 or E-Mail: jhicklyn@dickeyinc.com. Thank you for your continued patience and adherence to the construction safety zone advisories.



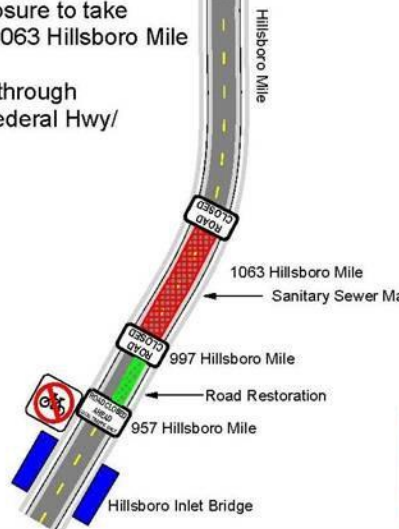


**Traffic Impact Report
For the week of December 31th, 2018**

-  Work Area - Hard closure
-  Work Area - Soft closure

Complete Road Closure to take place from 997 to 1063 Hillsboro Mile

Must follow detour through E. Hillsboro Blvd/Federal Hwy/NE 14th Street!



**Hillsboro Mile
Sanitary Sewer
Improvement Project**

