



CKE GROUP
 INCORPORATED
 engineering • architecture • planning
 15500 NEW BARN ROAD
 SUITE 100
 MIAMI LAKES, FLORIDA 33014
 PHONE: (305) 558-4124 FAX: (305) 826-0619
 EB#0004432

CONSULTANT:

SEAL:

EDUARDO L. CARACIO
 PROFESSIONAL ENGINEER #11814
 JACK D. RAUDENBUSH
 ARCHITECT #A19808

CVS/
 pharmacy

FLORIDA COASTAL
 13,013 - RIGHT HAND - REAR DT
 STORE NUMBER: 0000
 1600 S. FEDERAL HIGHWAY
 HOLLYWOOD, FLORIDA
 DEAL TYPE NEW

DEVELOPER:

BOOS DEVELOPMENT GROUP.
 2651 McCORMICK DRIVE
 CLEARWATER, FLORIDA 33759
 TEL (727) 669-2900
 FAX (727) 000-0000

REVISIONS:



DRAWING BY: D.E.

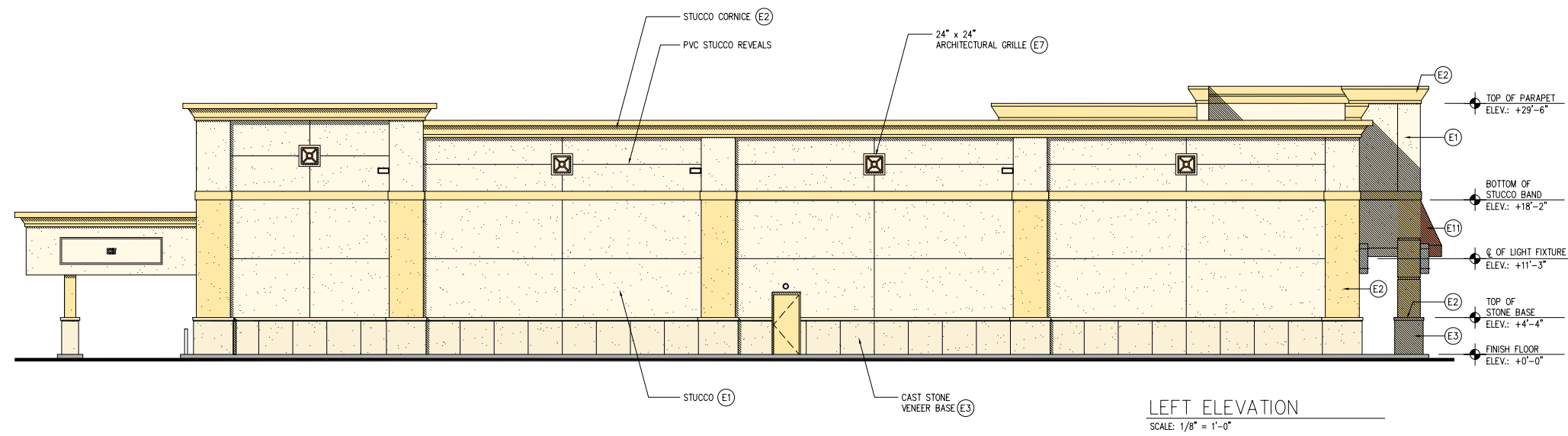
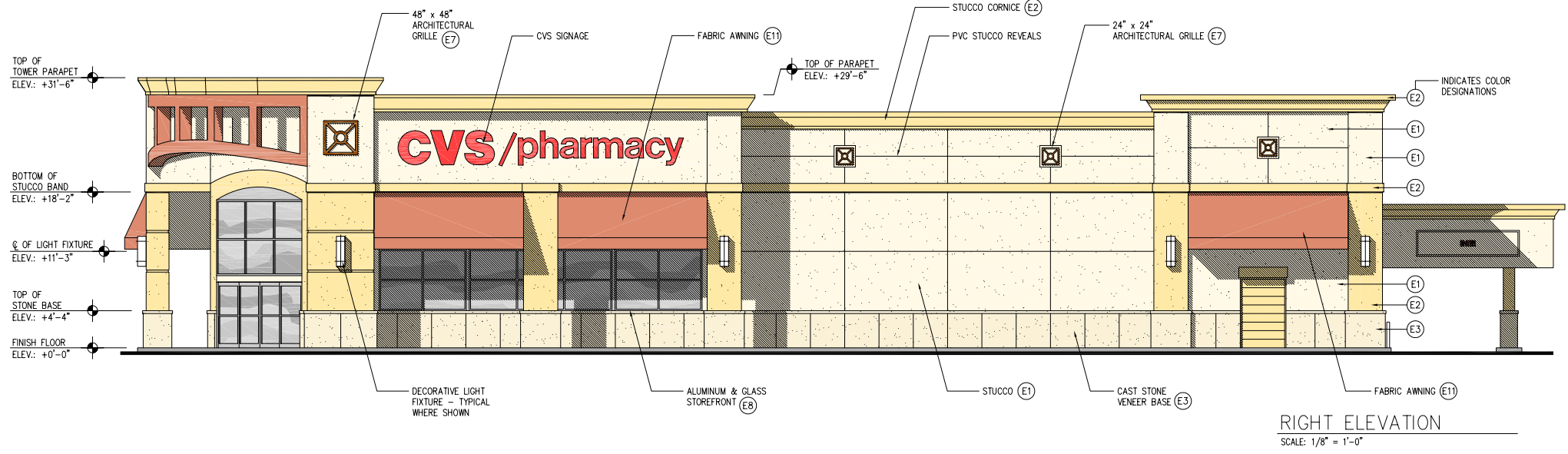
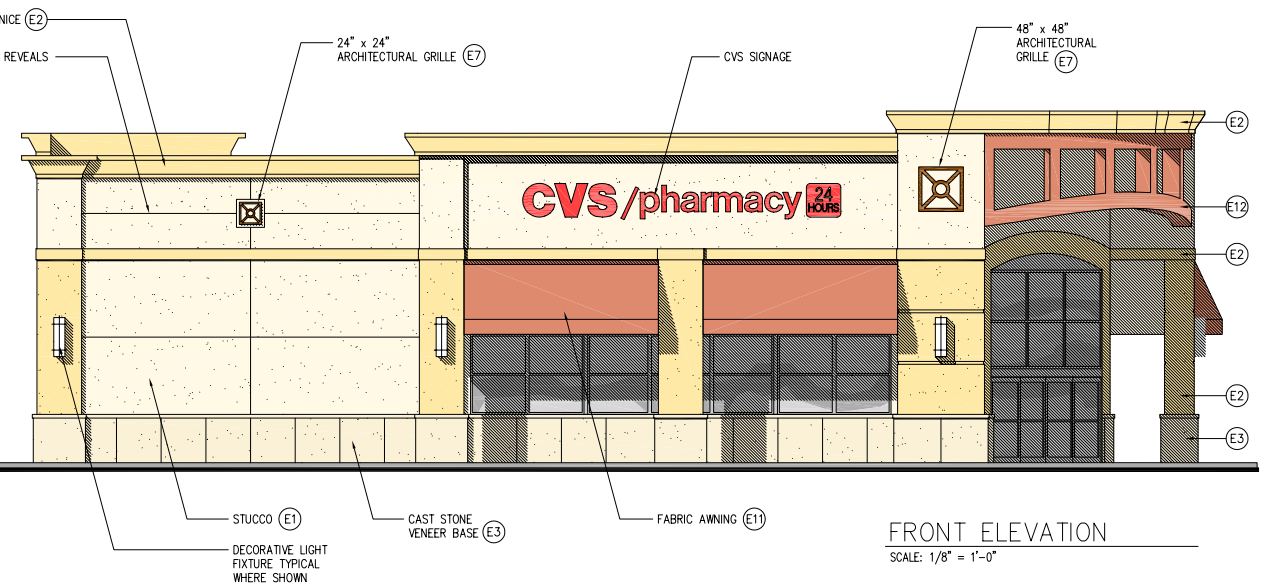
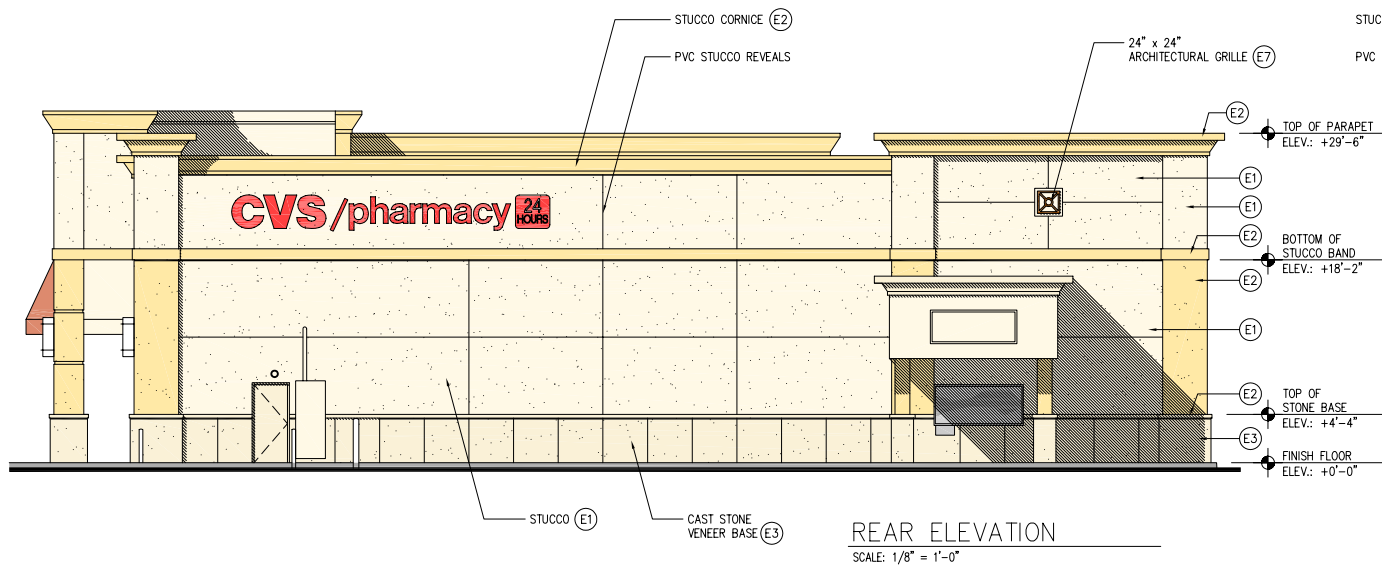
DATE: 27 JAN. 2009

JOB NUMBER: CKE #1141

TITLE:
 EXTERIOR ELEVATIONS

SHEET NUMBER:

COMMENTS:



EXTERIOR FINISH SCHEDULE				
TAG	MATERIAL / DESCRIPTION	MFR.	COLOR	NOTES
(E1)	STUCCO FINISH	SHERWIN WILLIAMS	WHITE ORGANDY	#SW1641
(E2)	STUCCO FINISH	SHERWIN WILLIAMS	ANTOINETTE PEACH	#SW1638
(E3)	LIMESTONE BASE	-	NATURAL	4'-0" WIDE PANELS
(E4)	PAINT	SHERWIN WILLIAMS	ANTOINETTE PEACH	#SW1638
(E5)	PAINT	BENJAMIN MOORE	MATCH OSHA YELLOW	TYP FOR ALL PIPE BOLLARDS
(E6)	PAINT	SHERWIN WILLIAMS	ANTOINETTE PEACH	#SW1638
(E7)	ARCHITECTURAL GRILLE	PINEAPPLE GROVE	ANTIQUE BRONZE	
(E8)	ALUM STOREFRONT	SEE SPECS	NATURAL ALUMINUM	
(E9)	ALUM CURTAIN WALL	SEE SPECS	NATURAL ALUMINUM	
(E10)	ALUM AUTOMATIC DOOR	STANLEY	NATURAL ALUMINUM	
(E11)	FABRIC AWNING	SUNBRELA	SALMON	COLOR #4627
(E12)	STUCCO FINISH	SHERWIN WILLIAMS	TASTEFUL TAN	#SW1320