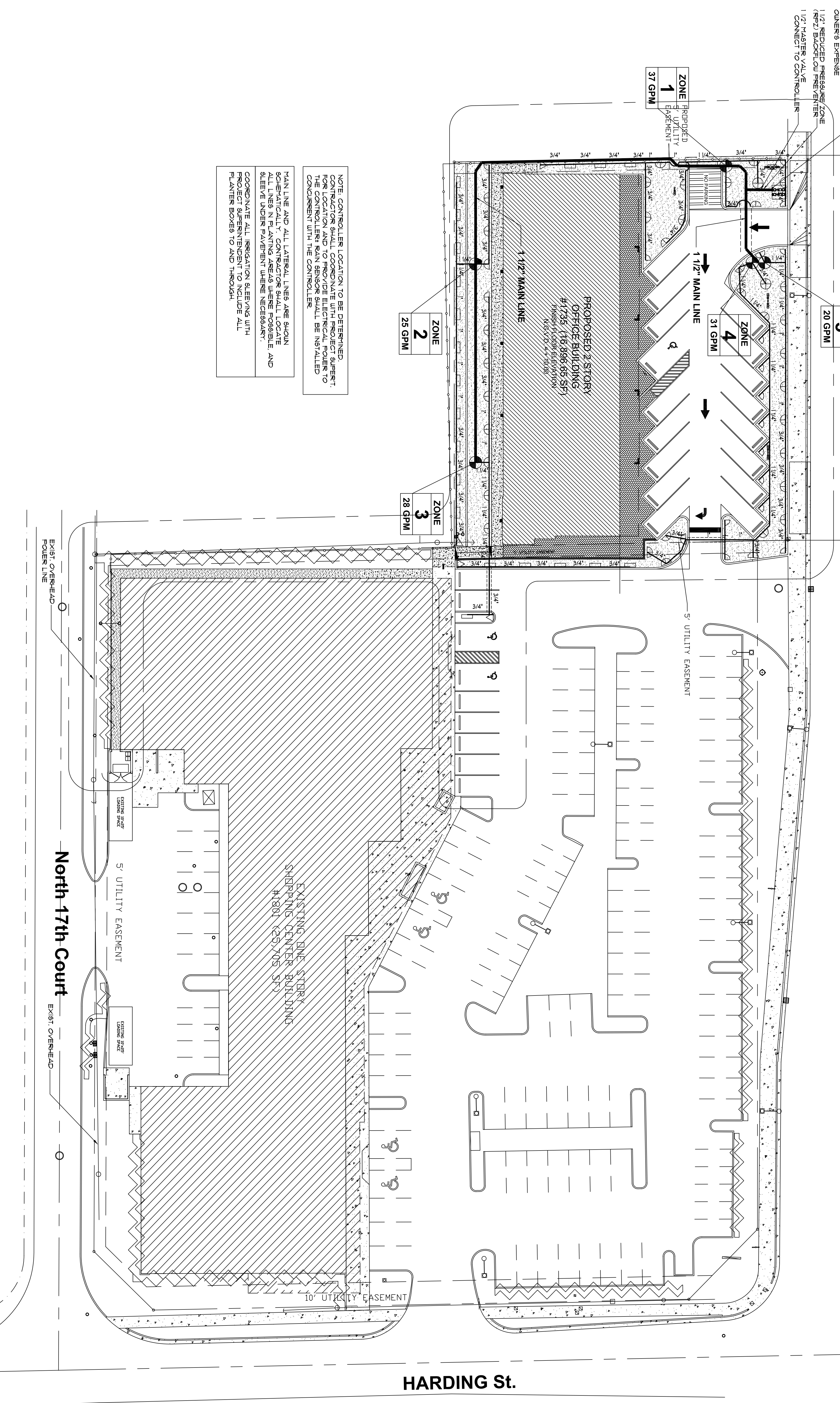


U.S. # 1 (S.R. # 5)



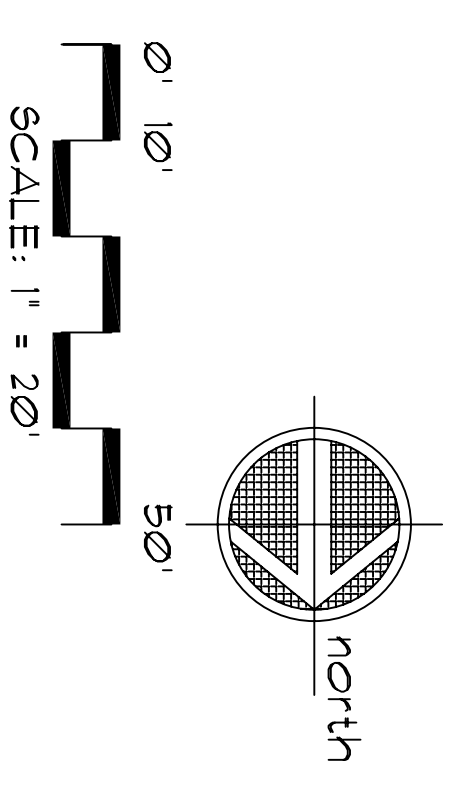
NOTE: CONTROLLER LOCATION TO BE DETERMINED. CONTRACTOR SHALL COORDINATE WITH PROJECT SUPERVISOR FOR LOCATION AND TO PROVIDE ELECTRICAL POWER TO THE CONTROLLER. RAIN SENSOR SHALL BE INSTALLED CONCURRENT WITH THE CONTROLLER.

MAIN LINE AND ALL LATERAL LINES ARE SHOWN SCHEMATICALLY. CONTRACTOR SHALL LOCATE ALL LINES IN PLANTING AREAS WHERE POSSIBLE AND SLEEVE UNDER PAVEMENT WHERE NECESSARY.

COORDINATE ALL IRRIGATION SLEEVES WITH PROJECT SUPERVISOR TO ENSURE ALL SLEEVES SLIDE ALL PLANTER BOXES TO AND THROUGH.

North 17th Court

HARDING St.



IRRIGATION PLAN

HARDING PLAZA
U.S. # 1 (S.R. # 5)
HOLLYWOOD, FL.

JFS
12060 Miramar Pkwy.
Miramar, FL 33025
TEL: (954) 447-1852
FAX: (954) 442-8225

JFS Design Inc.
LANDSCAPE ARCHITECTURE
LC 000393

Landscape Design
Irrigation Design
jimmy@jfsdesignfl.com

No.	Date	Revision
1.	04/17/07	Revised site plan from Project Arch. & subsequent changes.
2.	05/09/07	Revised site plan from Project Arch. & subsequent changes.
3.	11/13/08	Revised site plan from Project Arch. & subsequent changes.

designed: J. F. SOGASH
 drawn: B. DIAZ
 checked: T.Y. MORAN
 approved: J. F. SOGASH
 project #: 06-84
 scale: 1"=20'
 date: Oct 11, 2006
 cad ref: 06-84-71

JAMES F. SOGASH
L.A. # 0601132
Drawing:
IRR-1