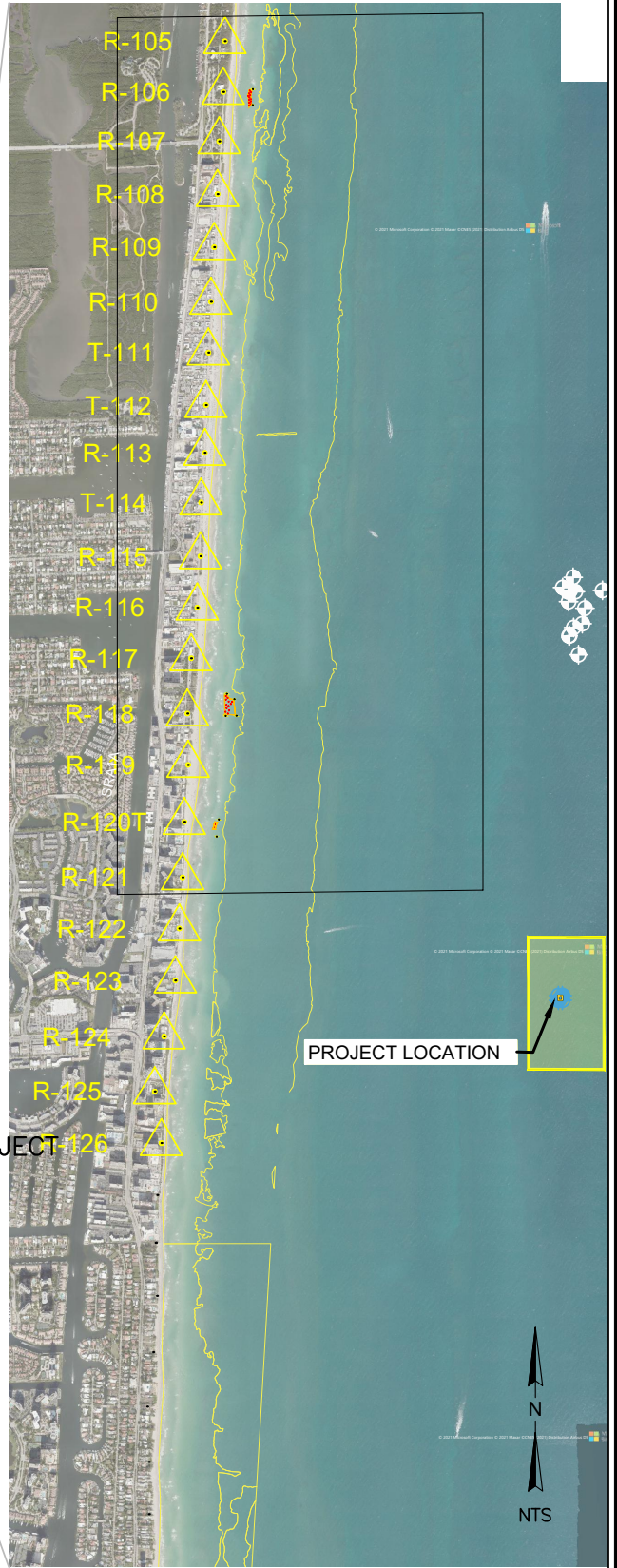
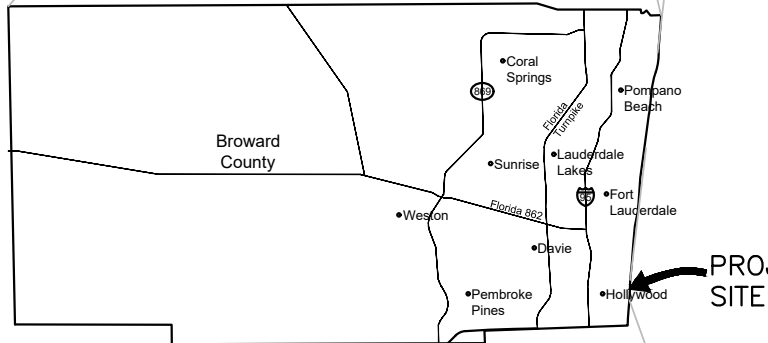
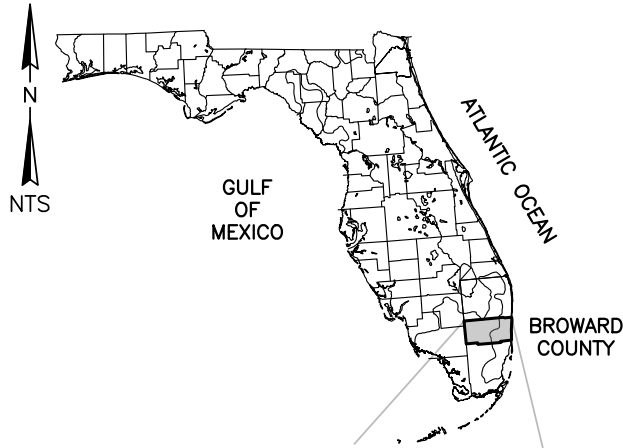


Hollywood Beach Mermaid Reef Module Locations



LOCATION: G:\WESTPALM\BROWARD\PROJECTS\20-3560_FL_HOLLYWOOD_MERMAID_REEF\PROJECTS\20-3560_FL_HOLLYWOOD_MERMAID_REEF\PERMITS\2022_HOLLYWOODBEACH_MERMAID_REEF_20_PTS_IN_BOX_LAYOUTS.DWG
DATE: 10/12/2022



2047 Vista Parkway, Suite 101
West Palm Beach, FL 33411
(561) 659-0041
Certificate of Authorization #4669

Cover Sheet/ Location Map

Hollywood Beach - Mermaid Reef
PERMIT SKETCHES

Figure 1

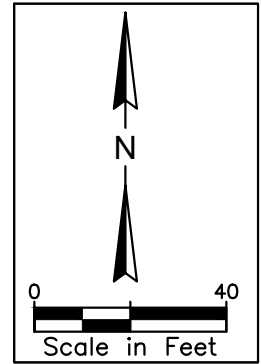
JOB NUMBER: 20-3560

ISSUE DATE: 10-12-2022

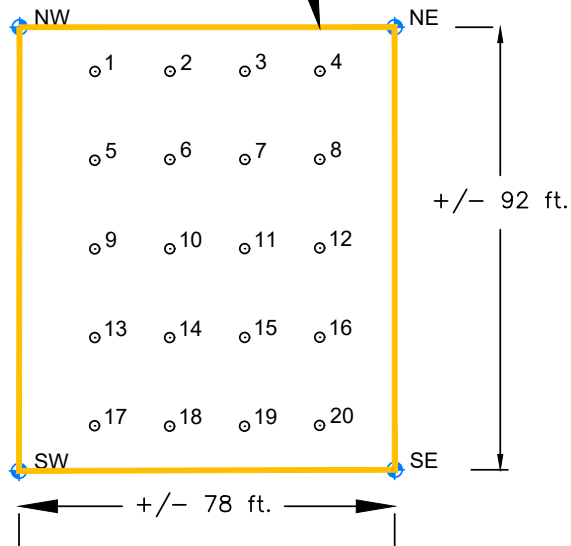
FOR PERMITTING PURPOSES ONLY
NOT FOR CONSTRUCTION

Michael G. Jenkins, Pd. D. P.E.
Professional Engineer
Florida License Number 58072

Module Point Table			
Point #	Northing (LAT.)	Easting (LONG.)	Module #
1	N25° 59' 17.84"	W80° 05' 39.99"	1
2	N25° 59' 17.84"	W80° 05' 39.82"	2
3	N25° 59' 17.84"	W80° 05' 39.65"	3
4	N25° 59' 17.84"	W80° 05' 39.48"	4
5	N25° 59' 17.66"	W80° 05' 39.99"	5
6	N25° 59' 17.66"	W80° 05' 39.82"	6
7	N25° 59' 17.66"	W80° 05' 39.65"	7
8	N25° 59' 17.66"	W80° 05' 39.48"	8
9	N25° 59' 17.48"	W80° 05' 39.99"	9
10	N25° 59' 17.48"	W80° 05' 39.82"	10
11	N25° 59' 17.48"	W80° 05' 39.65"	11
12	N25° 59' 17.48"	W80° 05' 39.48"	12
13	N25° 59' 17.29"	W80° 05' 39.99"	13
14	N25° 59' 17.29"	W80° 05' 39.82"	14
15	N25° 59' 17.29"	W80° 05' 39.65"	15
16	N25° 59' 17.29"	W80° 05' 39.48"	16
17	N25° 59' 17.11"	W80° 05' 40.00"	17
18	N25° 59' 17.11"	W80° 05' 39.82"	18
19	N25° 59' 17.11"	W80° 05' 39.65"	19
20	N25° 59' 17.11"	W80° 05' 39.48"	20



20 POINT BOX WITH
RANDOM SPACING



Note: Coordinates are in Degrees Minutes Seconds Format.



2047 Vista Parkway, Suite 101
West Palm Beach, FL 33411
(561) 659-0041
Certificate of Authorization #4669

Plan View

Hollywood Beach - Mermaid Reef
PERMIT SKETCHES

Figure 2

JOB NUMBER: 20-3560

ISSUE DATE: 10-12-2022

FOR PERMITTING PURPOSES ONLY
NOT FOR CONSTRUCTION

Michael G. Jenkins, Pd. D. P.E.
Professional Engineer
Florida License Number 58072